

TWENTY-ONE

6 WRITERS

6 DIRECTORS

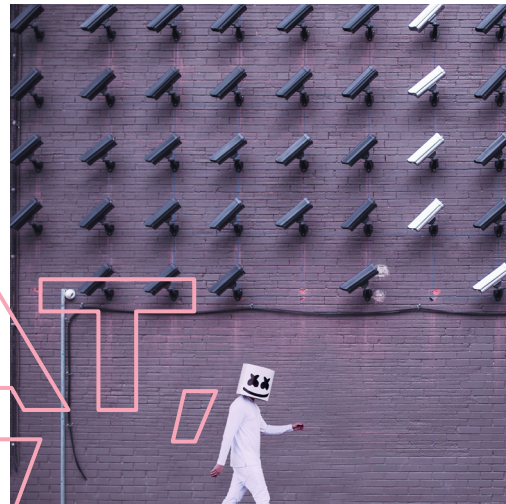
6 ACTORS

3 PRODUCTION

ARTISTS

ARE YOU AN EMERGING WRITER, DIRECTOR, ACTOR OR PRODUCTION ARTIST? WE WANT TO WORK WITH YOU.

WHAT
HOW
& WHO?



WHAT IS TWENTY-ONE?

La Boite is looking to engage with twenty-one emerging artists in a six-week skills development and showcase program.

We will work with six writers, six directors, six actors and three production artists who will participate in a six-week masterclass, creative development, collaboration and showcase program.

HOW WILL IT WORK?

1. Apply to be part of Twenty-One by filling in the application form.
2. Take part in an audition or interview for the program.
3. Successful applicants will then participate in six weeks of masterclasses, collaborative creative development and rehearsal.
4. Have your work showcased at the 2019 HWY festival of new work. Check out the La Boite website to read The Final Days of Bedlam preliminary education notes.

WHY PARTICIPATE IN TWENTY-ONE?

- Build your skills in a quick-punch process; idea, development, creation, rehearsal and production.
- Work with, and learn from, La Boite artists.
- Create new work.
- Collaborate with likeminded creatives.
- Showcase your skills and talent.
- Have your work performed at La Boite as part of HWY 2019

WRITERS

Writers will deep dive into the theatrical writing process, dramaturgy, drafting and editing. You will develop and craft a ten-minute monologue. Your work will then be paired with a Twenty-One actor and director who will collaborate to bring your script to life.

DIRECTORS

Directors will deep dive into the directing process, working with text, working with actors, developing a directorial vision and using production elements. You will be given a Twenty-One writer's ten-minute monologue. Then, working with a Twenty-One actor, you will direct the piece ready for production as part of our outcome in HWY 2019.

ACTORS

Actors will deep dive into acting process, working with text, character, voice and movement. You will be paired with a Twenty-One writer and director, collaborating with them to bring one ten-minute monologue to life at the HWY 2019 outcome.

PRODUCTION ARTISTS (SPECIFICALLY STAGE MANAGEMENT, LIGHTING DESIGN AND SOUND DESIGN)

Production artists will collaborate with the La Boite production artists and production department to further their specific skills. They will then collaborate with the Twenty-One directors to prepare for the outcome in HWY 2019.

POTENTIAL CURRICULUM CONNECTIONS: FROM THE AUSTRALIAN CURRICULUM IN QUEENSLAND BAND DESCRIPTIONS

EMERGING ARTISTS



HOW LA BOITE DEFINES EMERGING

We define 'emerging' as artists who are in the first five years of their practice in a specific art form.

For example: You may have just graduated from your arts course, and only been in the sector for one year. Or you may have been an actor for twenty-five years but have only recently started practicing as a playwright in the last three years.

If you have any questions about this, get in touch.

WHAT YOU WILL GET

- Six purpose built masterclasses with professional artists;
- Tickets to La Boite mainstage shows;
- Tickets to the HWY 2019 Performance Program and Conversation Series;
- La Boite Theatre Company t-shirt.

TWENTY-ONE MASTERCLASS DATES

Outcome	Date
Twenty-One launched	November 2018
Auditions & interviews	January 2019
Masterclass 1	Monday 11 February 2019
Masterclass 2	Monday 18 February 2019
Masterclass 3	Monday 25 February 2019
Masterclass 4	Monday 4 March 2019
Masterclass 5	Monday 11 March 2019
Masterclass 6	Monday 18 March 2019
Outcome	HWY 25 March – 6 April 2019

COST: \$300 PER PARTICIPANT*

*Payment plans available





La Boite Theatre Company is assisted by the Australian Government through the Australia Council, its funding and advisory body



La Boite Theatre Company is supported by the Queensland Government through Arts Queensland

Proudly supported by



Dedicated to a better Brisbane

Education Partner



 laboitetheatre
 laboitetheatreco
 laboitetheatrecompany
 laboite2019

LABOITE.COM.AU

FIN